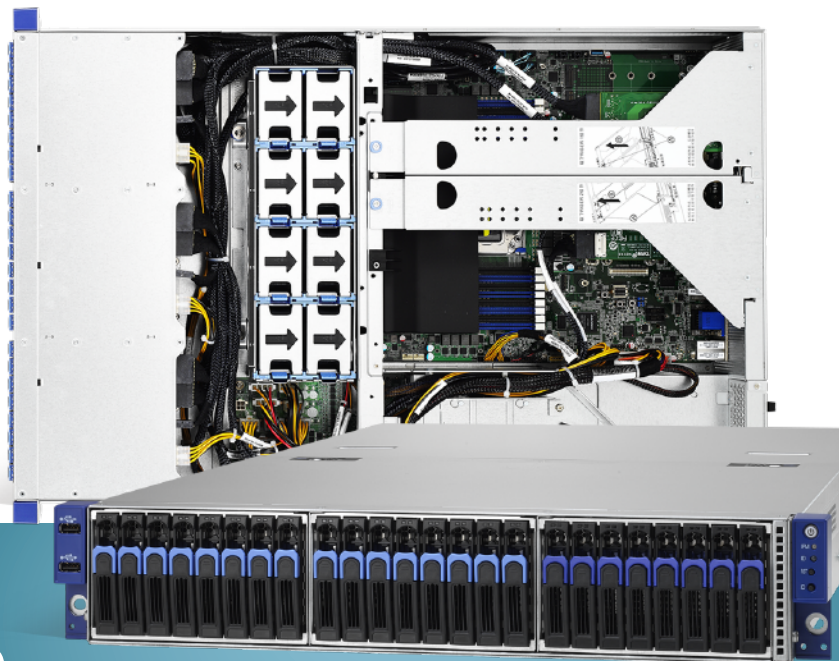


2U1S SERVER/ STORAGE PLATFORM



Transport SX TN70A-B8026 (24 Hot swap Drive Bays)

B8026T70AV16E8HR / B8026T70AV8E16HR / B8026T70AE24HR



Front View



- B8026T70AE24HR
(24) NVMe U.2



- B8026T70AV8E16HR
(8) 2.5" Hot-swap SSD/HDDs + (16) NVMe U.2



- B8026T70AV16E8HR
(16) 2.5" Hot-swap SSD/HDDs + (8) NVMe U.2

Back View



- (2) 2.5" Fixed SSD/HDDs (all skus)

2U1S storage server platform designed for hybrid storage applications

- Single Socket SP3
- (1) AMD EPYC™ 7001/7002 Series Processor
- (16) DDR4 DIMM slots support RDIMM/LRDIMM 2666/2400 ECC memory
- Up to (2) PCI-E Gen3 x16 + (1) PCI-E Gen3 x8 slots via riser cards + (1) PCI-E Gen3 x16 OCP 2.0 slot
- (2) GbE + (1) Dedicate IPMI GbE ports
- Onboard BMC w/ IPMI and iKVM support
- (1+1) 770W RPSU, 80+ Platinum

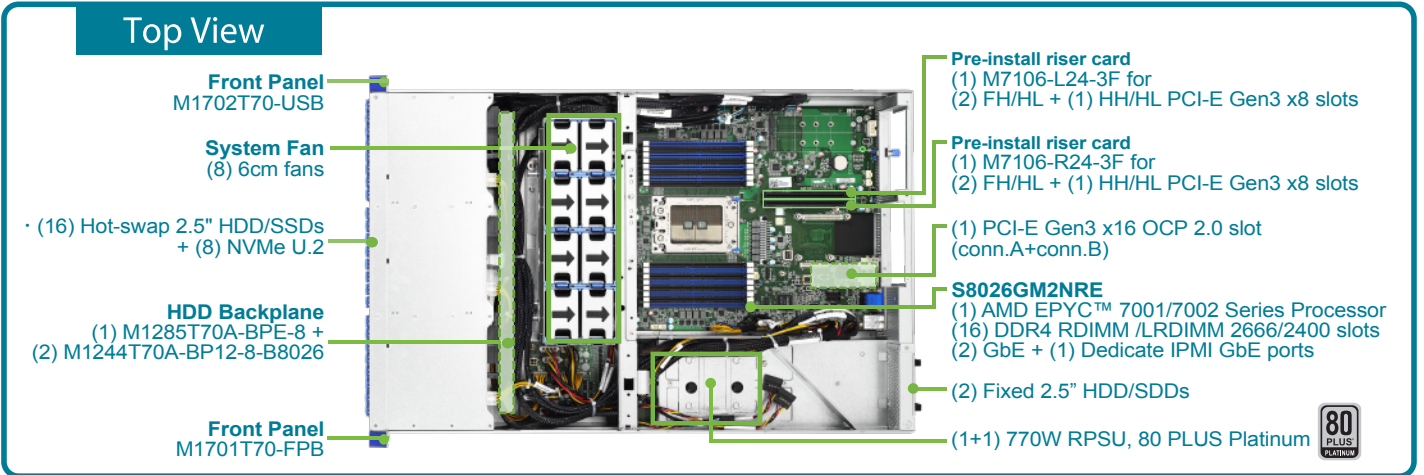
Summary Table

SKU	Motherboard	Drive Bays	Max. PCIe slot
B8026T70AV16E8HR	S8026GM2NRE	(8) Hot-Swap NVMe U.2 (16) Hot-Swap SATA (2) Internal SATA (@ rear)	(2) x16 (1) x8 (1) x16 OCP LAN
B8026T70AV8E16HR	S8026GM2NRE	(16) Hot-Swap NVMe U.2 (8) N/C bays open for HBA (2) Internal SATA (@ rear)	(2) x16 (1) x8 (1) x16 OCP LAN
B8026T70AE24HR	S8026GM2NRE	(24) Hot-Swap NVMe U.2 (2) Internal SATA (@ rear)	(1) x8 (1) x16 OCP LAN

Transport SX TN70A-B8026 (24 Hot swap Drive Bays)

B8026T70AV16E8HR

TYAN Specifications



System	Form Factor	2U Rackmount
	Chassis Name	TN70A
	Dimension (D x W x H)	27.56" x 17.72" x 3.43" (700 x 450 x 87mm)
	Motherboard	S8026GM2NRE
Front Panel	Gross Weight	30 kg (66 lbs)
	Net weight	19 kg (42 lbs)
	Buttons	(1) RST, (1) PWR w/ LED & (1) UID
External Drive Bay	LEDs	(1) ID & (1) Warning
	I/O Ports	(2) USB 2.0 ports
	Q'ty / Type	(16) 2.5" Hot-Swap SSD/HDDs + (8) NVMe U.2
Internal Drive Bay	HDD backplane support	SAS 12Gb/s, SATA 6Gb/s & NVMe
	Supported HDD Interface	(16) SATA 6Gb/s + (8) NVMe U.2
	Notification	The SAS/SATA HDD backplane is connected to onboard SATA connection by default. Please contact Tyan technical support if a discrete SAS HBA/RAID adapter installed is required.
System Cooling	Q'ty / Type	(2) 2.5" fixed SSD/HDDs
	Supported HDD Interface	(2) SATA 6Gb/s
Power Supply	FAN	(8) 6cm fans
	Type	RPSU
	Input Range	AC 100-127V/10A / AC 200-240V/5A
	Efficiency	80+ Platinum
Processor	Output Watts	770 Watts
	Redundancy	1+1
	Q'ty / Socket Type	(1) AMD Socket SP3
	Supported CPU Series	(1) AMD EPYC™ 7001/7002 Series Processor
Memory	Thermal Design Power (TDP) wattage	Max up to 180W
	Supported DIMM Qty	(16) DIMM slots
	DIMM Type / Speed	DDR4 ECC RDIMM/LRDIMM 2666/2400
	Capacity	Up to 1,024GB RDIMM/LRDIMM
	Memory channel	8 Channels
	Memory voltage	1.2V
Expansion Slots	Notification	LRDIMM is not supported when AMD EPYC™ 7002 Series Processors deployed in all configurations. Please contact Tyan Technical Support for more details.
	PCI-E	(2) PCI-E Gen3 x16 slots (FH / FL / SW) or (4) PCI-E Gen3 x8 slots (FH / FL) * split by Mux. (1) PCI-E Gen3 x8 slot (HH / HL w/ tall bracket)
	Pre-install TYAN Riser Card (PCI-E Gen3)	(1) M7106-L24-3F for (2) FH/HL + (1) HH/HL PCI-E Gen3 x8 slot (1) M7106-R24-3F for (2) FH/HL + (1) HH/HL PCI-E Gen3 x8 slot
	Others:	(1) PCI-E Gen3 x16 OCP 2.0 slot (conn.A+conn.B) *The PCI-E x8 signal routed to conn.B is mux'd with the bottom slot on M7106-R24-3F riser.
LAN	Port Q'ty	(2) GbE + (1) dedicated GbE for IPMI
	Controller	Broadcom BCM5720
	PHY Controller	Realtek® RTL8211E

(Specifications are subject to change without notice. Items pictured may only be representative.)

Storage	Connector	(2) SATA (8) SATA by third party solution
	Controller	Direct from AMD EYPC CPU Third party solution
	Speed	6Gb/s
	RAID	N/A
NVMe	Notification	The rear 2 SATA SSDs/HDDs are not available when AMD EPYC™ 7002 Series Processors deployed in all configurations. Please contact Tyan Technical Support for more details.
	Connector (OCuLink)	(8) SFF-8612 for (16) NVMe ports
	Connector (M.2)	(2) 22110/2280/2260/2242 (by PCI-E & SATA interface) 2 onboard M.2 connectors shall support NVMe only when AMD EPYC™ 7002 Series Processors deployed in all configurations. Please contact Tyan Technical Support for more details.
Graphic	Notification	
	Connector type	D-Sub 15-pin
Input/Output	Resolution	Up to 1920x1200
	Chipset	Aspeed AST2500
	USB	(2) USB 3.0 ports (@ rear) (2) USB 2.0 ports (@ front) (1) Type-A USB 3.1 port
TPM (Optional)	COM	(1) DB-9 port (COM1) + (1) header (COM2)
	VGA	(1) D-Sub 15-pin
System Monitoring	RJ-45	(2) GbE + (1) dedicated GbE for IPMI
	TPM Support	Please refer to our TPM supported list.
	Chipset	Onboard Aspeed AST2500
Server Management	Voltage	Monitors voltage for CPU, memory, chipset & power supply
	Temperature	Monitors temperature for CPU & memory & system environment
	LED (On system front panel)	Over temperature warning indicator, Fan & PSU fail LED indicator
BIOS	Others	Watchdog timer support
	Onboard Chipset	Onboard Aspeed AST2500
	AST2500 iKVM Feature	24-bit high quality video compression, Supports storage over IP and remote platform-flash & USB 2.0 virtual hub
Operating System	AST2500 IPMI Feature	IPMI 2.0 compliant baseboard management controller (BMC) & 10/100/1000 Mb/s MAC interface
	Brand / ROM size	AMI / 32MB
Regulation	Feature	Hardware Monitor, Boot from USB device/PXE via LAN/Storage, User Configurable FAN PWM Duty Cycle, Console Redirection, ACPI 6.1, SMBIOS 3.1/PnP/Wake on LAN, ACPI sleeping states S5
	OS supported list	Please refer to our AVL support list
Operating Environment	FCC (SDoC)	Class A
	CE (DoC)	Class A
	VCCI	Class A
	RCM	Class A
RoHS	CB/LVD	Yes
	Operating Temp.	10° C ~ 35° C (50° F ~ 95° F)
	Non-operating Temp.	-40° C ~ 70° C (-40° F ~ 158° F)
	In/Non-operating Humidity	90%, non-condensing at 35° C
	RoHS 6/6 Compliant	Yes

MiTAC Computing Technology Corp
TYAN Business Unit

USA
Tel: +1-510-651-8868
Fax: +1-510-651-7688

Taiwan
Tel: +886-3-327-5988
Fax: +886-3-327-6312

China
Shanghai Tel: +86-021-61431188 #1361
China Tel: +86-010-62381108 #2485

Japan
Tel: +81-3-3769-8311
Fax: +81-3-3769-8328

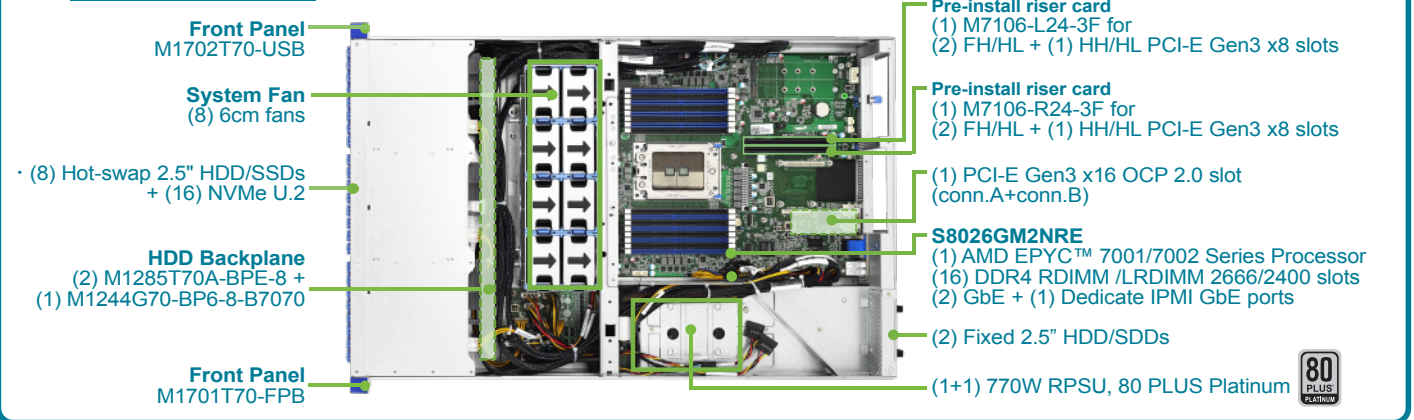
EMEA
Tel: +44 07540328523
Email: robin.daunter@tyan.com

Transport SX TN70A-B8026 (24 Hot swap Drive Bays)

B8026T70AV8E16HR

TYAN Specifications

Top View



System	Form Factor	2U Rackmount
	Chassis Name	TN70A
	Dimension (D x W x H)	27.56" x 17.72" x 3.43" (700 x 450 x 87mm)
	Motherboard	S8026GM2NRE
	Gross Weight	30 kg (66 lbs)
Front Panel	Buttons	(1) RST, (1) PWR w/ LED & (1) UID
	LEDs	(1) ID & (1) Warning
	I/O Ports	(2) USB 2.0 ports
External Drive Bay	Q'ty / Type	(8) 2.5" Hot-Swap SSD/HDDs + (16) NVMe
	HDD backplane support	SAS 12Gb/s, SATA 6Gb/s & NVMe
	Supported HDD Interface	(16) SATA 6Gb/s + (8) NVMe
	Notification	The SAS/SATA HDD backplane is connected to onboard SATA connection by default. Please contact Tyan technical support if a discrete SAS HBA/RAID adapter installed is required.
Internal Drive Bay	Q'ty / Type	(2) 2.5" fixed SSD/HDDs
System Cooling	Supported HDD Interface	(2) SATA 6Gb/s
	FAN	(8) 6cm fans
	Type	RPSU
	Input Range	AC 100-127V/10A / AC 200-240V/5A
Power Supply	Efficiency	80+ Platinum
	Output Watts	770 Watts
	Redundancy	1+1
Processor	Q'ty / Socket Type	(1) AMD Socket SP3
	Supported CPU Series	(1) AMD EPYC™ 7001/7002 Series Processor
	Thermal Design Power (TDP) wattage	Max up to 180W
	Supported DIMM Qty	(16) DIMM slots
Memory	DIMM Type / Speed	DDR4 ECC RDIMM/LRDIMM 2666/2400
	Capacity	Up to 1,024GB RDIMM/LRDIMM
	Memory channel	8 Channels
	Memory voltage	1.2V
	Notification	LRDIMM is not supported when AMD EPYC™ 7002 Series Processors deployed in all configurations. Please contact Tyan Technical Support for more details.
Expansion Slots	PCI-E	(2) PCI-E Gen3 x16 slots (FH / FL / SW) or (4) PCI-E Gen3 x8 slots (FH / FL) * split by Mux. (1) PCI-E Gen3 x8 slot (HH / HL w/ tall bracket)
	Pre-install TYAN Riser Card (PCI-E Gen3)	(1) M7106-L24-3F for (2) FH/HL + (1) HH/HL PCI-E Gen3 x8 slot (1) M7106-R24-3F for (2) FH/HL + (1) HH/HL PCI-E Gen3 x8 slot
	Others:	(1) PCI-E Gen3 x16 OCP 2.0 slot (conn.A+conn.B) *The PCI-E x8 signal routed to conn.B is mux'd with the bottom slot on M7106-R24-3F riser.
LAN	Port Q'ty	(2) GbE + (1) dedicated GbE for IPMI
	Controller	Broadcom BCM5720
	PHY Controller	Realtek® RTL8211E

(Specifications are subject to change without notice. Items pictured may only be representative.)

Storage	Connector	(2) SATA & (2) SFF-8612 for (16) SATA ports
	Controller	Direct from AMD EYPC CPU
	Speed	6Gb/s
	RAID	N/A
NVMe	Notification	The rear 2 SATA SSDs/HDDs are not available when AMD EPYC™ 7002 Series Processors deployed in all configurations. Please contact Tyan Technical Support for more details.
	Connector (OCuLink)	(4) SFF-8612 for (8) NVMe ports
	Connector (M.2)	(2) 22110/2280/2260/2242 (by PCI-E & SATA interface) 2 onboard M.2 connectors shall support NVMe only when AMD EPYC™ 7002 Series Processors deployed in all configurations. Please contact Tyan Technical Support for more details.
Graphic	Connector type	D-Sub 15-pin
	Resolution	Up to 1920x1200
	Chipset	Aspeed AST2500
Input / Output	USB	(2) USB 3.0 ports (@ rear) (2) USB 2.0 ports (@ front) (1) Type-A USB 3.1 port
	COM	(1) DB-9 port (COM1) + (1) header (COM2)
	VGA	(1) D-Sub 15-pin
	RJ-45	(2) GbE + (1) dedicated GbE for IPMI
TPM (Optional)	TPM Support	Please refer to our TPM supported list.
System Monitoring	Chipset	Onboard Aspeed AST2500
	Voltage	Monitors voltage for CPU, memory, chipset & power supply
	Temperature	Monitors temperature for CPU & memory & system environment
	LED (On system front panel)	Over temperature warning indicator, Fan & PSU fail LED indicator
Server Management	Others	Watchdog timer support
	Onboard Chipset	Onboard Aspeed AST2500
	AST2500 iKVM Feature	24-bit high quality video compression, Supports storage over IP and remote platform-flash & USB 2.0 virtual hub
BIOS	AST2500 IPMI Feature	IPMI 2.0 compliant baseboard management controller (BMC) & 10/100/1000 Mb/s MAC interface
	Brand / ROM size	AMI / 32MB
Operating System	Feature	Hardware Monitor, Boot from USB device/PXE via LAN/Storage, User Configurable FAN PWM Duty Cycle, Console Redirection, ACPI 6.1, SMBIOS 3.1/PnP/Wake on LAN, ACPI sleeping states S5
	OS supported list	Please refer to our AVL support list
Regulation	FCC (SDoC)	Class A
	CE (DoC)	Class A
	VCCI	Class A
	RCM	Class A
Operating Environment	CB/LVD	Yes
	Operating Temp.	10° C ~ 35° C (50° F ~ 95° F)
	Non-operating Temp.	-40° C ~ 70° C (-40° F ~ 158° F)
RoHS	In/Non-operating Humidity	90%, non-condensing at 35° C
	RoHS 6/6 Compliant	Yes

MiTAC Computing Technology Corp
TYAN Business Unit

USA
Tel: +1-510-651-8868
Fax: +1-510-651-7688

Taiwan
Tel: +886-3-327-5988
Fax: +886-3-327-6312

China
Shanghai Tel: +86-021-61431188 #1361
China Tel: +86-010-62381108 #2485

Japan
Tel: +81-3-3769-8311
Fax: +81-3-3769-8328

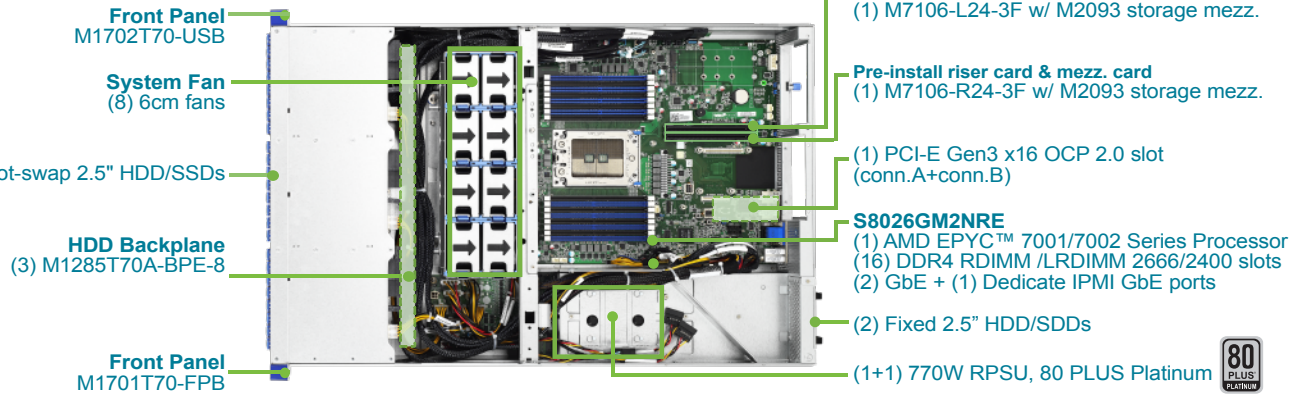
EMEA
Tel: +44 07540328523
Email: robin.daunter@tyan.com

Transport SX TN70A-B8026 (24 Hot swap Drive Bays)

B8026T70AE24HR

TYAN Specifications

Top View



System	Form Factor	2U Rackmount
	Chassis Name	TN70A
	Dimension (D x W x H)	27.56" x 17.72" x 3.43" (700 x 450 x 87mm)
	Motherboard	S8026GM2NRE
	Gross Weight	30 kg (66 lbs)
Front Panel	Buttons	(1) RST, (1) PWR w/ LED & (1) UID
	LEDs	(1) ID & (1) Warning
	I/O Ports	(2) USB 2.0 ports
External Drive Bay	Q'ty / Type	(24) 2.5" Hot-swap NVMe U.2
	HDD backplane support	SAS 12Gb/s, SATA 6Gb/s & NVMe
	Supported HDD Interface	(16) SATA 6Gb/s + (8) NVMe U.2
	Notification	The SAS/SATA HDD backplane is connected to onboard SATA connection by default. Please contact Tyan technical support if a discrete SAS HBA/RAID adapter installed is required.
Internal Drive Bay	Q'ty / Type	(2) 2.5" fixed SSD/HDDs
	Supported HDD Interface	(2) SATA 6Gb/s
System Cooling	FAN	(8) 6cm fans
Power Supply	Type	RPSU
	Input Range	AC 100-127V/10A / AC 200-240V/5A
	Efficiency	80+ Platinum
	Output Watts	770 Watts
Processor	Redundancy	1+1
	Q'ty / Socket Type	(1) AMD Socket SP3
	Supported CPU Series	(1) AMD EPYC™ 7001/7002 Series Processor
Memory	Thermal Design Power (TDP) wattage	Max up to 180W
	Supported DIMM Qty	(16) DIMM slots
	DIMM Type / Speed	DDR4 ECC RDIMM/LRDIMM 2666/2400
	Capacity	Up to 1,024GB RDIMM/LRDIMM
	Memory channel	8 Channels
	Memory voltage	1.2V
Expansion Slots	Notification	LRDIMM is not supported when AMD EPYC™ 7002 Series Processors deployed in all configurations. Please contact Tyan Technical Support for more details.
	PCI-E	(1) PCI-E Gen3 x8 slot (HH / HL w/ tall bracket)
	Pre-install TYAN Riser Card (PCI-E Gen3)	(1) M7106-L24-3F (1) M7106-R24-3F
	Pre-install TYAN Mezz. Card (PCI-E)	(2) M2093 storage mezz. cards w/ in total (4) SFF-8612 connectors for up to (8) NVMe connections (1) PCI-E Gen3 x16 OCP 2.0 slot (conn.A+conn.B) *The PCI-E x8 signal routed to conn.B is mux'd with the bottom slot on M7106-R24-3F riser.
	Others:	
LAN	Port Q'ty	(2) GbE + (1) dedicated GbE for IPMI
	Controller	Broadcom BCM5720
	PHY Controller	Realtek® RTL8211E

(Specifications are subject to change without notice. Items pictured may only be representative.)

Storage	Connector	(2) SATA
	Controller	Direct from AMD EYPC CPU
	Speed	6Gb/s
	RAID	N/A
NVMe	Notification	The rear 2 SATA SSDs/HDDs are not available when AMD EPYC™ 7002 Series Processors deployed in all configurations. Please contact Tyan Technical Support for more details.
	Connector (OCuLink)	(8) SFF-8612 for (16) NVMe ports (4) SFF-8612 for (8) NVMe ports via (2) Tyan M2093 storage mezz. Card
	Connector (M.2)	(2) 22110/2280/2260/2242 (by PCI-E & SATA interface)
Graphic	Notification	2 onboard M.2 connectors shall support NVMe only when AMD EPYC™ 7002 Series Processors deployed in all configurations. Please contact Tyan Technical Support for more details.
	Connector type	D-Sub 15-pin
Input /Output	Resolution	Up to 1920x1200
	Chipset	Asped AST2500
TPM (Optional)	USB	(2) USB 3.0 ports (@ rear) (2) USB 2.0 ports (@ front) (1) Type-A USB 3.1 port
	COM	(1) DB-9 port (COM1) + (1) header (COM2)
System Monitoring	VGA	(1) D-Sub 15-pin
	RJ-45	(2) GbE + (1) dedicated GbE for IPMI
	TPM Support	Please refer to our TPM supported list.
	Chipset	Onboard Asped AST2500
Server Management	Voltage	Monitors voltage for CPU, memory, chipset & power supply
	Temperature	Monitors temperature for CPU & memory & system environment
	LED (On system front panel)	Over temperature warning indicator, Fan & PSU fail LED indicator
BIOS	Others	Watchdog timer support
	Onboard Chipset	Onboard Asped AST2500
Operating System	AST2500 iKVM Feature	24-bit high quality video compression, Supports storage over IP and remote platform-flash & USB 2.0 virtual hub
	AST2500 IPMI Feature	IPMI 2.0 compliant baseboard management controller (BMC) & 10/100/1000 Mb/s MAC interface
Regulation	Brand / ROM size	AMI / 32MB
	Feature	Hardware Monitor, Boot from USB device/PXE via LAN/Storage, User Configurable FAN PWM Duty Cycle, Console Redirection, ACPI 6.1, SMBIOS 3.1/PnP/Wake on LAN, ACPI sleeping states S5
	OS supported list	Please refer to our AVL support list
Operating Environment	FCC (SDoC)	Class A
	CE (DoC)	Class A
	VCCI	Class A
	RCM	Class A
RoHS	CB/LVD	Yes
	Operating Temp.	10° C ~ 35° C (50° F ~ 95° F)
RoHS	Non-operating Temp.	- 40° C ~ 70° C (-40° F ~ 158° F)
	In/Non-operating Humidity	90%, non-condensing at 35° C
RoHS	RoHS 6/6 Compliant	Yes

MiTAC Computing Technology Corp
TYAN Business Unit

USA
Tel: +1-510-651-8868
Fax: +1-510-651-7688

Taiwan
Tel: +886-3-327-5988
Fax: +886-3-327-6312

China
Shanghai Tel: +86-021-61431188 #1361
China Tel: +86-010-62381108 #2485

Japan
Tel: +81-3-3769-8311
Fax: +81-3-3769-8328

EMEA
Tel: +44 07540328523
Email: robin.daunter@tyan.com