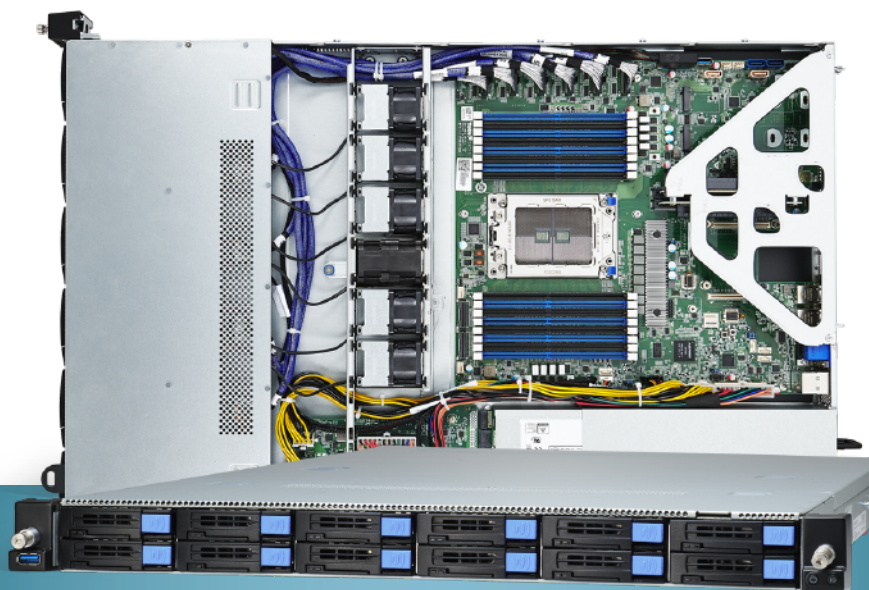


# 1U1S CLOUD SERVER PLATFORM



## Transport CX GC68A-B8036

B8036G68AE12HR / B8036G68AV10E2HR-LE



### ■ Front View



• B8036G68AE12HR  
(12) NVMe U.2 w/(4) SATA 6G



• B8036G68AV10E2HR-LE  
(12) SFF SATA 6G w/ (2) NVMe U.2

### ■ Back View



• (1+1) 850W CRPS, 80+ Platinum

## 1U1S server platform designed for CSP Compute Applications

- Single Socket SP3
- (1) AMD EPYC™ 7002/7003 Series Processor
- (16) RDIMM/RDIMM 3DS/LRDIMM/LRDIMM 3DS 3200, Up to 2048GB RDIMM/4096GB LRDIMM 3DS
- Up to (2) PCIe Gen.4 x16 slots via riser cards + (1) PCIe Gen.3 x16 OCP 2.0 slot
- (2) GbE + (1) IPMI ports
- Onboard BMC w/ IPMI and iKVM support
- (1+1) 850W CRPS, 80+ Platinum

### ■ Summary Table

SKU	Motherboard	Storage
B8036G68AE12HR	S8036GM2NE	(12) NVMe U.2 w/(4) SATA 6G
B8036G68AV10E2HR-LE	S8036GM2NE-LE	(12) SFF SATA 6G w/ (2) NVMe U.2



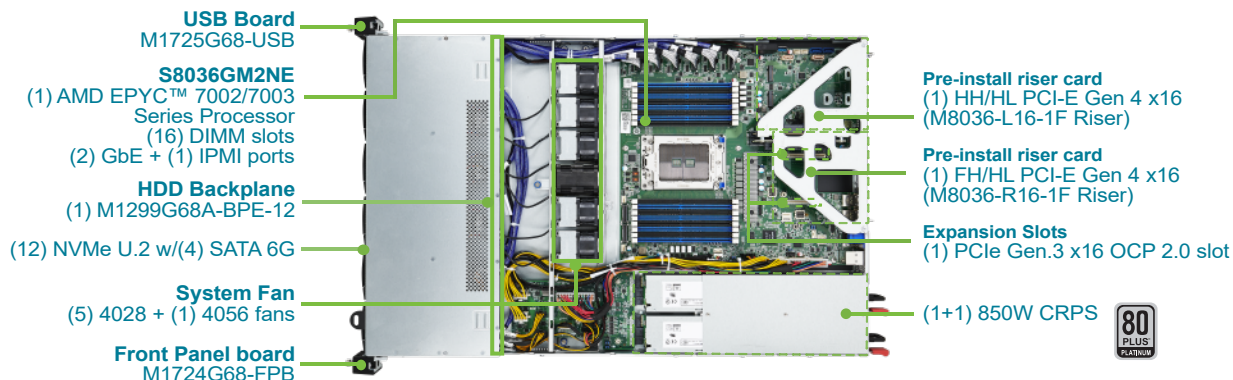
# Transport CX GC68A-B8036

B8036G68AE12HR

# TYAN

## Specifications

### Top View



System	<b>Form Factor</b>	1U Rackmount
	<b>Chassis Name</b>	GC68A
	<b>Dimension (D x W x H)</b>	26.77" x 17.26" x 1.69" (680 x 438.5 x 43mm)
	<b>Motherboard</b>	S8036GM2NE
	<b>Gross Weight</b>	20 kg (44 lbs)
Front Panel	<b>Net weight</b>	10.5kg (23.5 lbs)
	<b>Buttons</b>	(1) ID / (1) PWR w/ LED
External Drive Bay	<b>LEDs</b>	(1) PWR / (1) ID
	<b>I/O Ports</b>	(1) USB 3.1 Gen.1 port
System Cooling Configuration	<b>Q'ty / Type</b>	(12) hot-swap 2.5" NVMe HDD/SSDs with (4) hot-swap 2.5" SATA 6Gb/s
	<b>HDD backplane support</b>	SAS 12Gb/s /SATA 6Gb/s /NVMe
	<b>Supported HDD Interface</b>	(4) SATA 6Gb/s & SAS* / (12) NVMe
Power Supply	<b>Notification</b>	The SAS/SATA HDD backplane is connected to onboard SATA connection by default. Please contact Tyan technical support if a discrete SAS HBA/RAID adapter is required.
	<b>FAN</b>	(5) 4028 + (1) 4056 fans
Processor	<b>Type</b>	CRPS
	<b>Input Range</b>	AC 100~240V/ 12~6A
Memory	<b>Efficiency</b>	80 plus Platinum
	<b>Output Watts</b>	850 Watts
Expansion Slots	<b>Redundancy</b>	1+1
	<b>Q'ty / Socket Type</b>	(1) AMD Socket SP3
LAN	<b>Supported CPU Series</b>	(1) AMD EPYC™ 7002/7003 Series Processor
	<b>Thermal Design Power (TDP) wattage</b>	Max up to 240W, 280W CPUs follow Tyan AVL
Operating System	<b>Supported DIMM Qty</b>	(16) DIMM slots
	<b>DIMM Type / Speed</b>	RDIMM DDR4 3200 w/ ECC up to 2,048GB (=128GB*16) / LRDIMM DDR4 3200 w/ ECC up to 4,096GB (=256GB*16) / 3DS DDR4 3200 w/ ECC up to 4,096GB (=256*16)
Regulation	<b>Capacity</b>	Up to 2,048GB RDIMM / 4,096GB LRDIMM 3DS
	<b>Memory channel</b>	8 Channels per CPU
RoHS	<b>Memory voltage</b>	1.2V
	<b>PCI-E</b>	(1) PCIe Gen.4 x16 slot (FH/HL) / (1) PCIe Gen.4 x16 slot (HH/HL)
Form Factor	<b>Pre-install TYAN Riser Card (PCIe Gen.4)</b>	(1) M8036-L16-1F for (1) HH/HL PCIe Gen.4 x16 slot (Left) / (1) M8036-R16-1F for (1) FH/HL PCIe Gen.4 x16 slot (Right)
	<b>Others:</b>	(1) PCIe Gen.3 x16 OCP v2.0 mezzanine slot
System Monitoring	<b>Port Q'ty</b>	(2) GbE ports + (1) GbE dedicated for IPMI
	<b>Controller</b>	Broadcom BCM5720 LOM
Storage	<b>PHY Controller</b>	Realtek RTL8211E
	<b>Connector</b>	(4) SATA 7-pin connectors for (4) front SATA
Input / Output	<b>Controller</b>	Marvell 9235
	<b>Speed</b>	6Gb/s
TPM (Optional)	<b>RAID</b>	N/A
	<b>Connector (M.2)</b>	(2) 22110/2280 (by PCIe Gen.3 & SATA interface)
System Monitoring	<b>Connector (U.2)</b>	(6) SFF-8654 for (12) NVMe ports
	<b>Connector type</b>	D-Sub 15-pin
Server Management	<b>Resolution</b>	Up to 1920x1200
	<b>Chipset</b>	Aspeed AST2500
BIOS	<b>USB</b>	(2) USB3.1 Gen.1 ports (@ rear) / (2) USB3.1 Gen.1 ports (via Cable) / (1) USB3.1 Gen.1 port (Type-A)
	<b>COM</b>	(1) DB-9 port (COM1) + (1) header (COM2)
Operating System	<b>VGA</b>	(1) D-Sub 15-pin port
	<b>RJ-45</b>	(2) GbE ports, (1) dedicated GbE for IPMI
Regulation	<b>TPM Support</b>	Please refer to our TPM supported list.
	<b>Chipset</b>	Aspeed AST2500
Operating Environment	<b>Voltage</b>	Monitors voltage for CPU, memory, chipset & power supply
	<b>Temperature</b>	Monitors temperature for CPU & memory & system environment
RoHS	<b>LED</b>	Over temperature warning indicator / Fan & PSU fail LED indicator
	<b>Others</b>	Watchdog timer support
Form Factor	<b>Onboard Chipset</b>	Onboard Aspeed AST2500
	<b>AST2500 iKVM Feature</b>	24-bit high quality video compression / Supports storage over IP and remote platform-flash / USB 2.0 virtual hub
System Monitoring	<b>AST2500 IPMI Feature</b>	IPMI 2.0 compliant baseboard management controller (BMC) / 10/100/1000 Mb/s MAC interface
	<b>Brand / ROM size</b>	AMI / 32MB
Regulation	<b>Feature</b>	Hardware Monitor / SMBIOS 3.0/PnP/Wake on LAN / Boot from USB device/PXE via LAN/Storage / Console Redirection / ACPI 6.1 / ACPI sleeping states S0, S5 / FAN speed control automatic
	<b>OS supported list</b>	Please refer to our AVL support list
Operating Environment	<b>FCC (SDoC)</b>	Class A
	<b>CE (DoC)</b>	Class A
RoHS	<b>VCCI</b>	Class A
	<b>RCM</b>	Class A
Form Factor	<b>CB/LVD</b>	Yes
	<b>Operating Temp.</b>	10° C ~ 35° C (50° F ~ 95° F)
System Monitoring	<b>Non-operating Temp.</b>	- 40° C ~ 70° C (-40° F ~ 158° F)
	<b>In/Non-operating Humidity</b>	90%, non-condensing at 35° C
Storage	<b>RoHS 6/6 Complaint</b>	Yes

Storage	<b>Connector</b>	(4) SATA 7-pin connectors for (4) front SATA
	<b>Controller</b>	Marvell 9235
Input / Output	<b>Speed</b>	6Gb/s
	<b>RAID</b>	N/A
TPM (Optional)	<b>Connector (M.2)</b>	(2) 22110/2280 (by PCIe Gen.3 & SATA interface)
	<b>Connector (U.2)</b>	(6) SFF-8654 for (12) NVMe ports
System Monitoring	<b>Connector type</b>	D-Sub 15-pin
	<b>Resolution</b>	Up to 1920x1200
Server Management	<b>Chipset</b>	Aspeed AST2500
	<b>USB</b>	(2) USB3.1 Gen.1 ports (@ rear) / (2) USB3.1 Gen.1 ports (via Cable) / (1) USB3.1 Gen.1 port (Type-A)
BIOS	<b>COM</b>	(1) DB-9 port (COM1) + (1) header (COM2)
	<b>VGA</b>	(1) D-Sub 15-pin port
Operating System	<b>RJ-45</b>	(2) GbE ports, (1) dedicated GbE for IPMI
	<b>TPM Support</b>	Please refer to our TPM supported list.
Regulation	<b>Chipset</b>	Aspeed AST2500
	<b>Voltage</b>	Monitors voltage for CPU, memory, chipset & power supply
Operating Environment	<b>Temperature</b>	Monitors temperature for CPU & memory & system environment
	<b>LED</b>	Over temperature warning indicator / Fan & PSU fail LED indicator
RoHS	<b>Others</b>	Watchdog timer support
	<b>Onboard Chipset</b>	Onboard Aspeed AST2500
System Monitoring	<b>AST2500 iKVM Feature</b>	24-bit high quality video compression / Supports storage over IP and remote platform-flash / USB 2.0 virtual hub
	<b>AST2500 IPMI Feature</b>	IPMI 2.0 compliant baseboard management controller (BMC) / 10/100/1000 Mb/s MAC interface
Regulation	<b>Brand / ROM size</b>	AMI / 32MB
	<b>Feature</b>	Hardware Monitor / SMBIOS 3.0/PnP/Wake on LAN / Boot from USB device/PXE via LAN/Storage / Console Redirection / ACPI 6.1 / ACPI sleeping states S0, S5 / FAN speed control automatic
Operating System	<b>OS supported list</b>	Please refer to our AVL support list
	<b>FCC (SDoC)</b>	Class A
Regulation	<b>CE (DoC)</b>	Class A
	<b>VCCI</b>	Class A
Operating Environment	<b>RCM</b>	Class A
	<b>CB/LVD</b>	Yes
RoHS	<b>Operating Temp.</b>	10° C ~ 35° C (50° F ~ 95° F)
	<b>Non-operating Temp.</b>	- 40° C ~ 70° C (-40° F ~ 158° F)
Form Factor	<b>In/Non-operating Humidity</b>	90%, non-condensing at 35° C
	<b>RoHS 6/6 Complaint</b>	Yes

(Specifications are subject to change without notice. Items pictured may only be representative.)

## MiTAC Computing Technology Corp

**USA**  
Tel: +1-510-651-8868  
Fax: +1-510-651-7688

**Taiwan**  
Tel: +886-3-327-5988  
Fax: +886-3-327-6312

**China**  
Shanghai Tel: +86-021-61431188 #1361  
China Tel: +86-010-62381108 #2485

**Japan**  
Tel: +81-3-3769-8311  
Fax: +81-3-3769-8328

**EMEA**  
Tel: +44 07540328523  
Email: robin.daunter@tyan.com

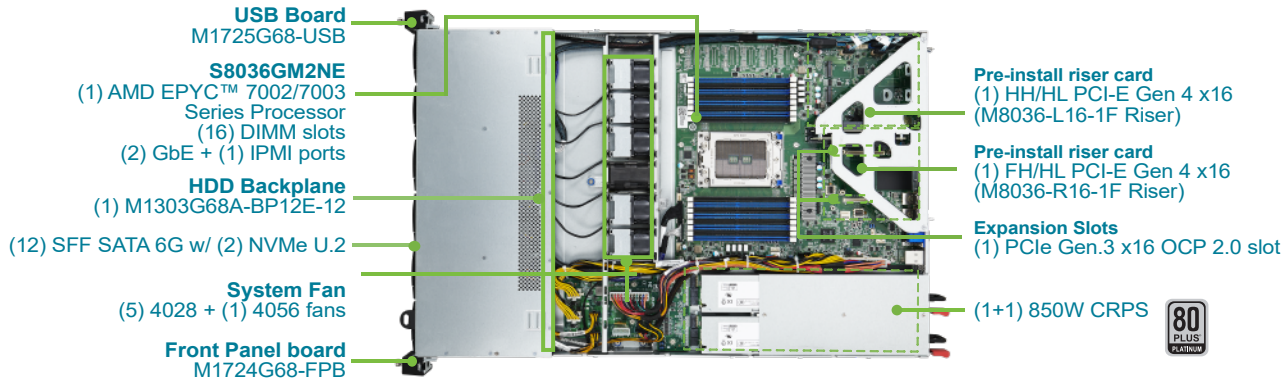
# Transport CX GC68A-B8036

B8036G68AV10E2HR-LE

# TYAN

## Specifications

### Top View



System	<b>Form Factor</b>	1U Rackmount
	<b>Chassis Name</b>	GC68A
	<b>Dimension (D x W x H)</b>	26.77" x 17.26" x 1.69" (680 x 438.5 x 43mm)
	<b>Motherboard</b>	S8036GM2NE-LE # The motherboard not sold separately
	<b>Gross Weight</b>	20 kg (44 lbs)
Front Panel	<b>Net weight</b>	10.5kg (23.5 lbs)
	<b>Buttons</b>	(1) ID / (1) PWR w/ LED
	<b>LEDs</b>	(1) PWR / (1) ID
External Drive Bay	<b>I/O Ports</b>	(1) USB 3.1 Gen.1 port
	<b>Q'ty / Type</b>	(12) hot-swap 2.5" SATA 6Gb/s with (2) hot-swap 2.5" NVMe
	<b>HDD backplane support</b>	SAS 12Gb/s /SATA 6Gb/s /NVMe
	<b>Supported HDD Interface</b>	(12) SATA 6Gb/s & SAS* / (2) NVMe
	<b>Notification</b>	The SAS/SATA HDD backplane is connected to onboard SATA connection by default. Please contact Tyan technical support if a discrete SAS HBA/RAID adapter is required.
System Cooling Configuration	<b>FAN</b>	(5) 4028 + (1) 4056 fans
Power Supply	<b>Type</b>	CRPS
	<b>Input Range</b>	AC 100~240V/ 12~6A
	<b>Efficiency</b>	80 plus Platinum
	<b>Output Watts</b>	850 Watts
Processor	<b>Redundancy</b>	1+1
	<b>Q'ty / Socket Type</b>	(1) AMD Socket SP3
	<b>Supported CPU Series</b>	(1) AMD EPYC™ 7002/7003 Series Processor
Memory	<b>Thermal Design Power (TDP) wattage</b>	Max up to 240W, 280W CPUs follow Tyan AVL
	<b>Supported DIMM Qty</b>	(16) DIMM slots
	<b>DIMM Type / Speed</b>	RDIMM DDR4 3200 w/ ECC up to 2,048GB (=128GB*16) / LRDIMM DDR4 3200 w/ ECC up to 4,096GB (=256GB*16) / 3DS DDR4 3200 w/ ECC up to 4,096GB (=256*16)
	<b>Capacity</b>	Up to 2,048GB RDIMM / 4,096GB LRDIMM 3DS
	<b>Memory channel</b>	8 Channels per CPU
	<b>Memory voltage</b>	1.2V
Expansion Slots	<b>PCI-E</b>	(1) PCIe Gen.4 x16 slot (FH/HL) / (1) PCIe Gen.4 x16 slot (HH/HL)
	<b>Pre-install TYAN Riser Card (PCIe Gen.4)</b>	(1) M8036-L16-1F for (1) HH/HL PCIe Gen.4 x16 slot (Left) / (1) M8036-R16-1F for (1) FH/HL PCIe Gen.4 x16 slot (Right)
	<b>Others:</b>	(1) PCIe Gen.3 x16 OCP v2.0 mezzanine slot
LAN	<b>Port Q'ty</b>	(2) GbE ports + (1) GbE dedicated for IPMI
	<b>Controller</b>	Broadcom BCM5720 LOM
	<b>PHY Controller</b>	Realtek RTL8211E

Storage	<b>SATA</b>	<b>Connector</b>	(1) SFF-8654 connector for (8) front SATA / (4) SATA 7-pin connectors for (4) front SATA
		<b>Controller</b>	Direct from AMD EPYC CPU / Marvell 9235?
		<b>Speed</b>	6Gb/s
		<b>RAID</b>	N/A
Graphic	<b>NVMe</b>	<b>Connector (M.2)</b>	(2) 22110/2280 (by PCIe Gen.3 & SATA interface)
		<b>Connector (U.2)</b>	(1) SFF-8654 for (2) NVMe ports
Input/Output	<b>Connector type</b>	D-Sub 15-pin	
	<b>Resolution</b>	Up to 1920x1200	
	<b>Chipset</b>	Aspeed AST2500	
	<b>USB</b>	(2) USB3.1 Gen.1 ports (@ rear) / (2) USB3.1 Gen.1 ports (via Cable) / (1) USB3.1 Gen.1 port (Type-A)	
	<b>COM</b>	(1) DB-9 port (COM1) + (1) header (COM2)	
TPM (Optional)	<b>VGA</b>	(1) D-Sub 15-pin port	
	<b>RJ-45</b>	(2) GbE ports, (1) dedicated GbE for IPMI	
	<b>TPM Support</b>	Please refer to our TPM supported list.	
System Monitoring	<b>Chipset</b>	Aspeed AST2500	
	<b>Voltage</b>	Monitors voltage for CPU, memory, chipset & power supply	
	<b>Temperature</b>	Monitors temperature for CPU & memory & system environment	
	<b>LED</b>	Over temperature warning indicator / Fan & PSU fail LED indicator	
Server Management	<b>Others</b>	Watchdog timer support	
	<b>Onboard Chipset</b>	Onboard Aspeed AST2500	
	<b>AST2500 iKVM Feature</b>	24-bit high quality video compression / Supports storage over IP and remote platform-flash / USB 2.0 virtual hub	
BIOS	<b>AST2500 IPMI Feature</b>	IPMI 2.0 compliant baseboard management controller (BMC) / 10/100/1000 Mb/s MAC interface	
	<b>Brand / ROM size</b>	AMI / 32MB	
Operating System	<b>Feature</b>	Hardware Monitor / SMBIOS 3.0/PnP/Wake on LAN / Boot from USB device/PXE via LAN/Storage / Console Redirection / ACPI 6.1 / ACPI sleeping states S0, S5 / FAN speed control automatic	
	<b>OS supported list</b>	Please refer to our AVL support list	
Regulation	<b>FCC (SDoC)</b>	Class A	
	<b>CE (DoC)</b>	Class A	
	<b>VCCI</b>	Class A	
	<b>RCM</b>	Class A	
Operating Environment	<b>CB/LVD</b>	Yes	
	<b>Operating Temp.</b>	10° C ~ 35° C (50° F ~ 95° F)	
	<b>Non-operating Temp.</b>	- 40° C ~ 70° C (-40° F ~ 158° F)	
RoHS	<b>In/Non-operating Humidity</b>	90%, non-condensing at 35° C	
	<b>RoHS 6/6 Compliant</b>	Yes	

(Specifications are subject to change without notice. Items pictured may only be representative.)

## MiTAC Computing Technology Corp

**USA**  
Tel: +1-510-651-8868  
Fax: +1-510-651-7688

**Taiwan**  
Tel: +886-3-327-5988  
Fax: +886-3-327-6312

**China**  
Shanghai Tel: +86-021-61431188 #1361  
China Tel: +86-010-62381108 #2485

**Japan**  
Tel: +81-3-3769-8311  
Fax: +81-3-3769-8328

**EMEA**  
Tel: +44 07540328523  
Email: robin.daunter@tyan.com

